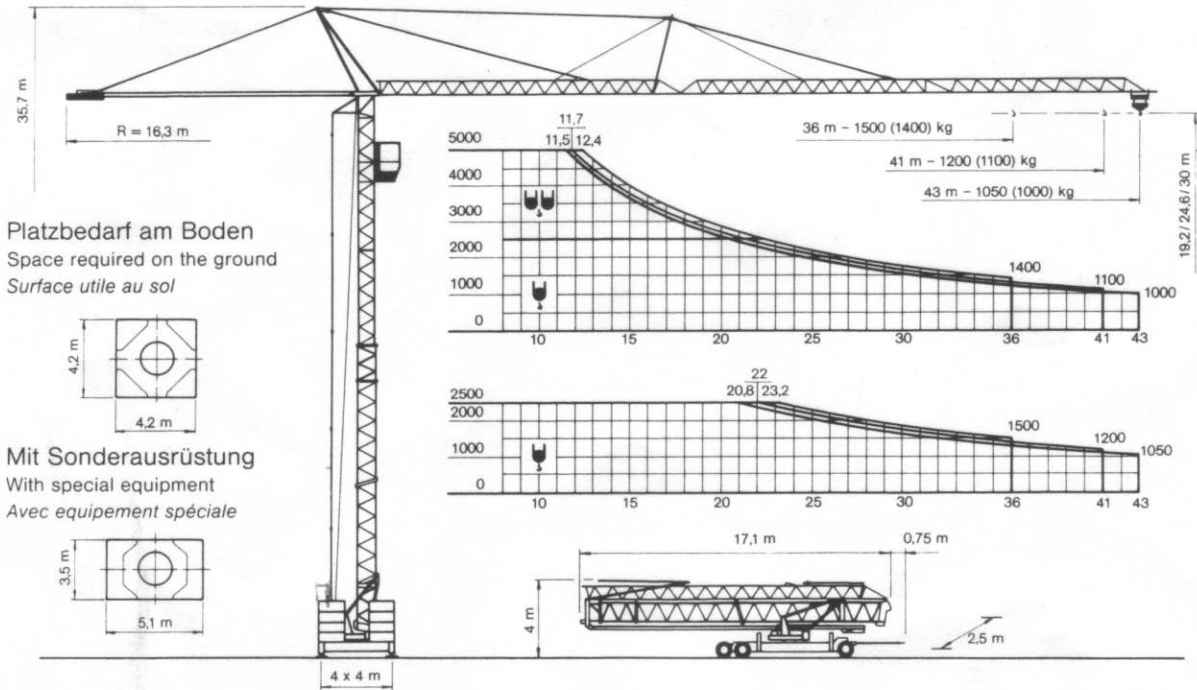
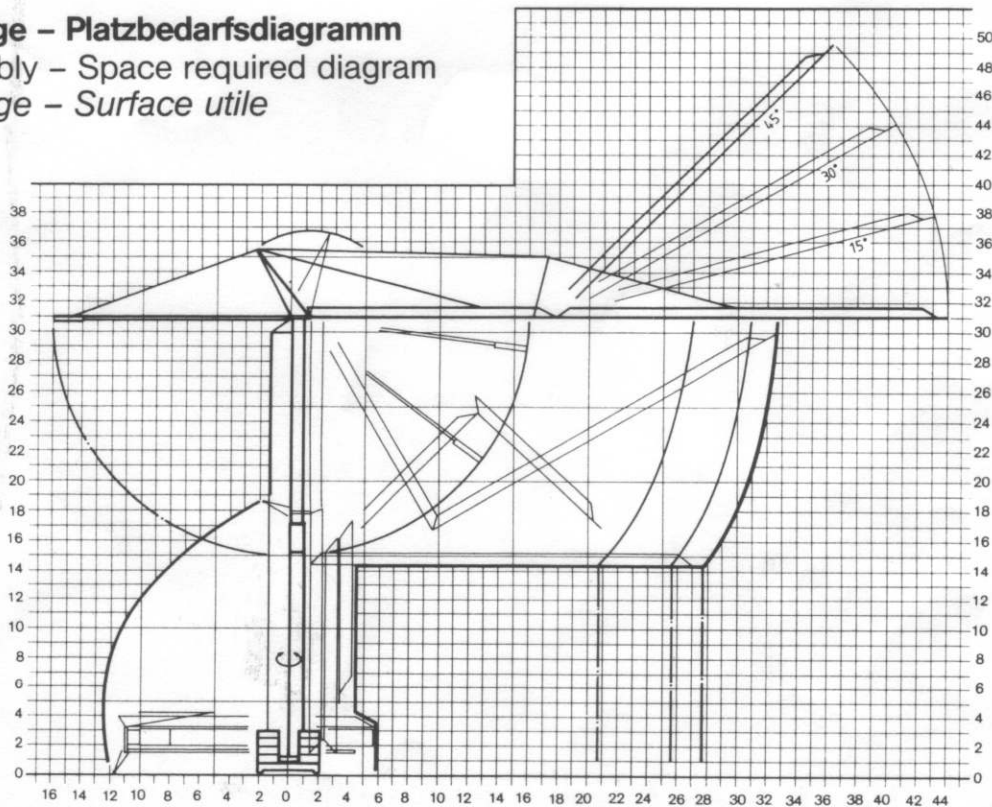


PEKAZETT 4310 CSMF





BGL 2105 - 0056
 36 m - 1500 kg, 41 m - 1200 kg,
 43 m - 1050 kg, max. - 5000 kg









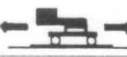




Montage - Platzbedarfsdiagramm
 Assembly - Space required diagram
Montage - Surface utile



PEKAZETT 4310 CSMF

Leistungsdaten performance data details techniques	Ausladung (m) radius portée	Tragkraft (kg) lifting capacity capacité		Max. Tragkraft (kg) lifting capacity max. capacité max.	
					
Grundgerät basic design flèche de base	36	1500	1400	2500	5000
Auslegerverlängerung I jib extension I rallonge de flèche I	41	1200	1100	2500	5000
Auslegerverlängerung II jib extension II rallonge de flèche II	43	1050	1000	2500	5000

Geschwindigkeiten speeds vitesses	Heben lifting levage				
		kg	m/min.	kg	m/min
 		1000	70	2000	35
		1500	60	3000	30
		2000	48	4000	24
		2500	34	5000	17
		2500	32	5000	16
		2500	6	5000	3
		2500	6	5000	3
	Katzfahren trolley drive / chariotage		m/min.	8,5/30/51	
	Kranfahren traveling / translation		m/min.	30	
	Drehen slewing / rotation		r. p. m.	0,1 ↔ 1,0	
	Auslegerverstellen jib luffing / relevage flèche		0 - 45°	35 sec.	

Allgemeine technische Daten

general technical data / details techniques generaux

Konstruktionsgewicht weight / poids de la grue	kg	19500	Ges. elektr. Leistung motor power / puissance totale	kW	32
Gegengewicht counterweight / contrepoids	kg	3930	Kabelquerschnitt cable section / section du câble	380 V	5 x 16
Zentralballast central ballast / lest central	kg	24000*	Kabeltrommel cable drum / enrouleur	m	70
Spurweite track gauge / ecartement	m	3,8	Schienenprofil rail profile / profile du rail		S33-S49
Radstand wheel gauge / voie	m	4,0	Max. Eckdruck max. wheel load / pression max.	kN	305
Drehradius slewing radius / rayon de giration	m	1,65	* Zentralballast CH central ballast CH / lest central CH 24000 kg		

Montage

Assembly

Montage

