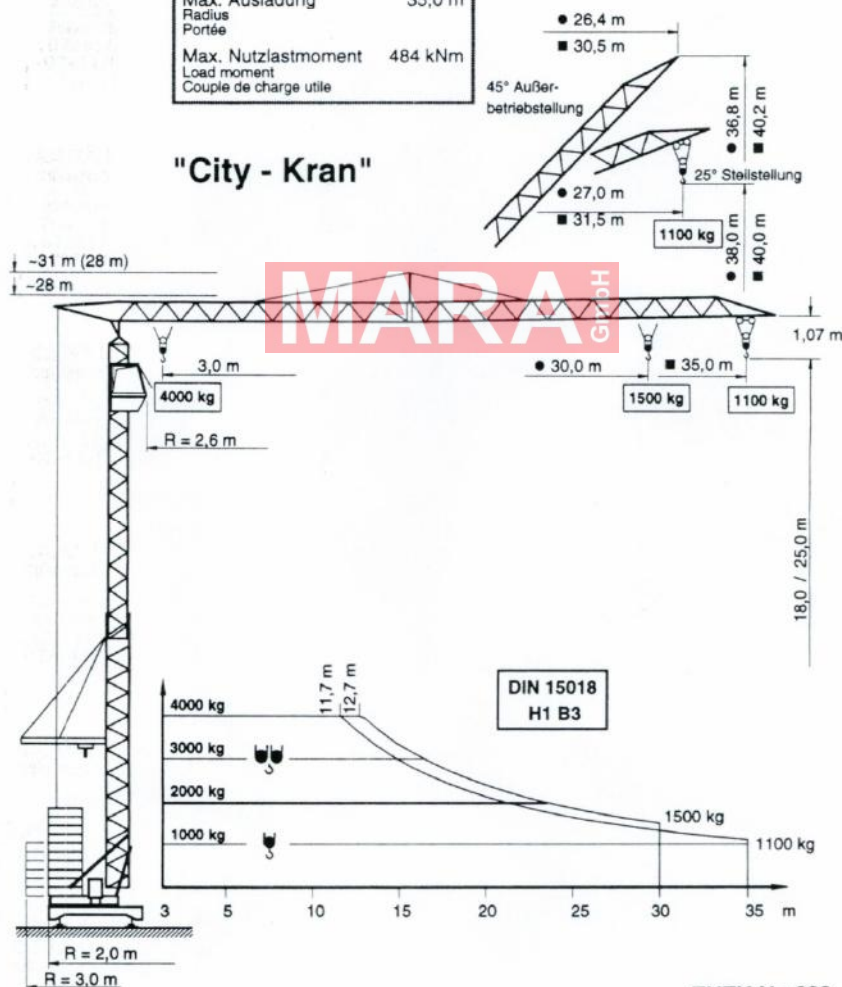


Typenblatt Specification Sheet Fiche Technique

PEINER Schnellmontagekran SMK 206 Fast self erecting tower crane Grue à montage rapide

Max. Tragfähigkeit Lifting capacity Force de levage	4,0 t
Max. Ausladung Radius Portée	35,0 m
Max. Nutzlastmoment Load moment Couple de charge utile	484 kNm

"City - Kran"



ZUTK Nr. 628 + CE