

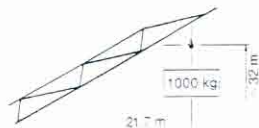
PEINER

Schnellaufbaukran SMK 203

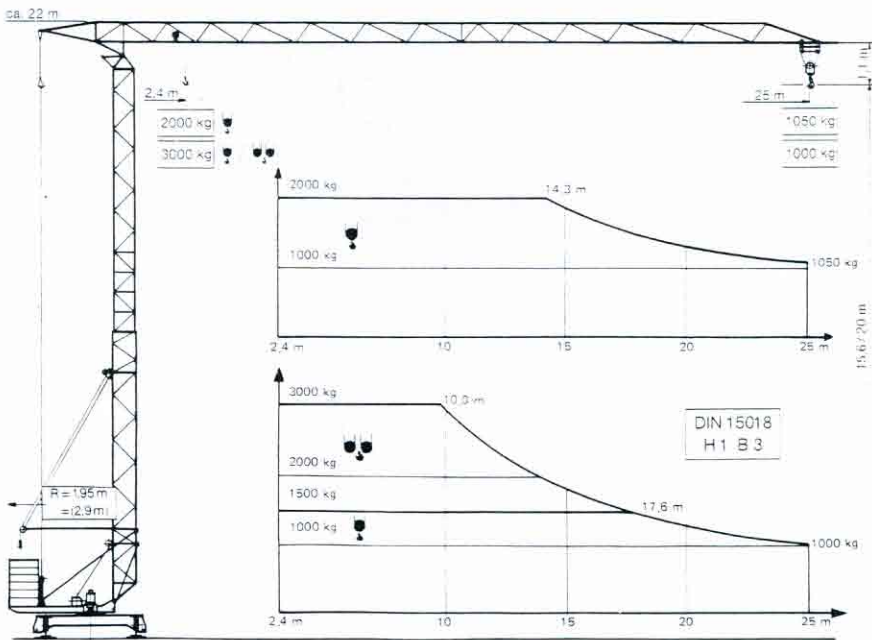
Fast self erecting tower crane

Grue à montage rapide

Max. Tragfähigkeit	3,0 t
Lifting capacity	
Force de levage	
Max. Ausladung	25 m
Radius	
Portée	
Max. Nutzlastmoment	300 kNm
Load moment	
Couple de charge utile	



“City-Kran”



ZUTK Nr. 0616