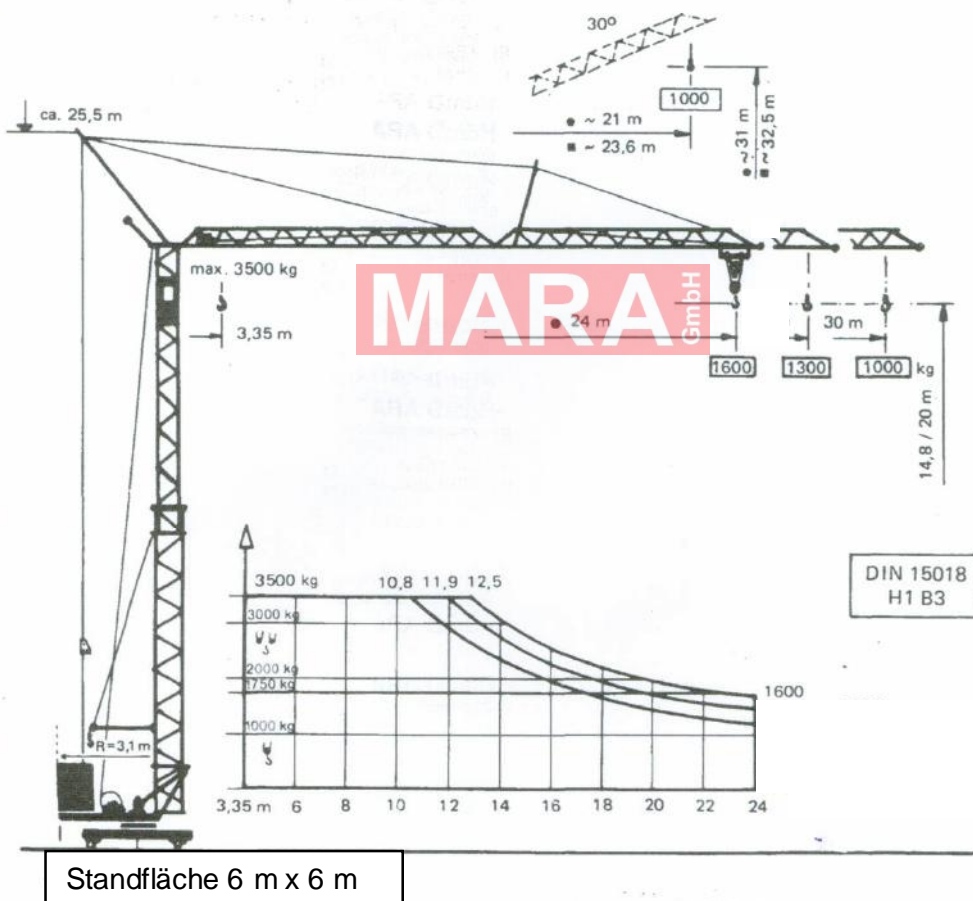


Typenblatt
Specification Sheet
Fiche Technique

PEINER Schnellaufbaukran SMK 104/2

Fast self erecting tower crane
Grue à montage rapide

PEINER SCHNELLAUFBAUKRAN · TOWER CRANE · GRUE A TOUR












Peiner Schnellaufbaukran SMK 104/2

Peiner fast self erecting tower crane
 Grue Peiner à montage rapide

Max. Tragfähigkeit Lifting capacity Force de levage	3,5 to
Max. Ausladung Radius Portee	30 m
Max. Nutzlastmoment Load moment Couple de charge utile	440 kNm

Geschwindigkeiten / speeds / Vitesses

Type							Motor- Leistung Power Puissance KW
		m/min	kg	m/min	kg		
HL3 / 1000		45	1000	22	2000	11	10,3
		22	1750	11	3500		
		5 m/min		2,5 m/min			
KS1 / 3		v = 31 m / min.					1,8
FZ1 / 30		v = 30 m / min.					2 x 1,5
DIWO / 30		n = 0,4 / 1,0 min ⁻¹					1,5
380 V / 50 Hz / 3 Ph		Anschlußwert / connection power / Puissance installée					≈ 18 KW

Gewichte + Maße / weights and size / Poids et mesures

Konstruktionsgewicht Construction weight Poids de construction	kg	12500	Führerstand Sichthöhe Height of sight from drivers cabin Hauteur de vue de la cabine	m	ca. 20/15
Gegengewicht Counterweight Contre - poids	kg	16000	Kabeltrommel (Fahrweg) Cable winder (length of track) Enrouler (longueur de voie)	m	60.
max. Eckdruck max. wheel load Pression max. par galot	KN	160	Kabelquerschnitt Cable cross section Section du câble	mm ²	4 x 10
Spurweite / Radstand track gauge / wheel gauge Ecartement de voie / Empâtement	m	3,2	Schienenprofil Rail profile Rail profil		S33/S49

Straßentransport mit KSL 14 / Road transport with KSL 14 / Transport en route avec KSL 14

