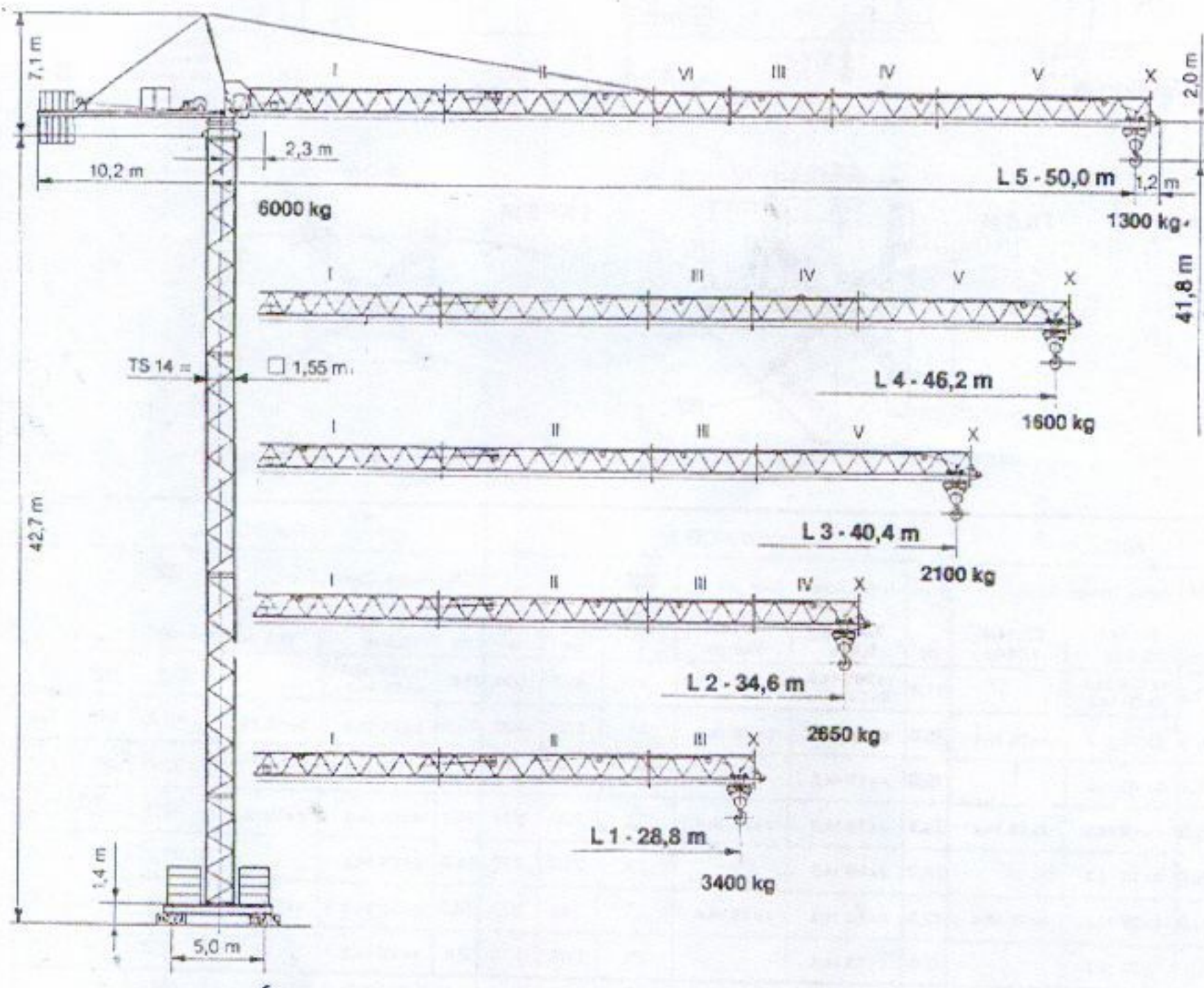


neu

PEINER SK 96

DIN 15018	H1/B3
BGL 2125	0090
Max. Tragfähigkeit Lifting capacity Force de levage	6,0 t
Max. Ausladung Radius Portée	50,0 m
Max. Nutzlastmoment Load moment Couple de charge utile	1050 kNm



Unsere Vertretung:
Our representative:
Notre représentant:

LAMBOR
ul. Zakopiańska 52A, Kraków
tel/fax 012 266 22 10; 269 00 77
tel kom. 0602 308 315
<http://www.lambor.com.pl>
e-mail: info@lambor.com.pl

PEINER TURMDREHKRAN · TOWER CRANE · GRUE A TOUR